



TIIG

INJURY SURVEILLANCE IN THE NORTH WEST OF ENGLAND

ROYAL OLDHAM HOSPITAL EMERGENCY DEPARTMENT

MONTHLY BULLETIN: OCTOBER 2013 TO SEPTEMBER 2014

This bulletin provides a breakdown of all injury attendances to Royal Oldham Hospital Emergency Department (ED) between October 2013 and September 2014.

During this twelve month period there were 33,563 injury attendances to the ED. The month with the highest number of attendances, calculated as a daily average, was June 2014 (108 per day) with December 2013 having the lowest attendances (78 per day; **Figure 1**).

Males accounted for over half (54%) of all injury attendances (**Figure 1**). The highest proportions of attendances were for those aged between five and 19 years (26%) and between 20 and 34 years (22%; **Figure 2**).

Fifty-seven per cent of injury attendances were categorised as other injuries. Falls accounted for 26%, road traffic collisions (RTCs) for 8% and assaults for 4% of attendances (**Table 1**).

Close to four in ten (37%) fall attendees were aged 65 years or over, close to four in ten (39%) RTC attendees were aged between 20 and 34 years and close to half (46%) of assault attendees were aged between 20 and 34 years (**Figure 3**).

Table 2 shows the ethnicity of injury attendees to Royal Oldham Hospital ED. Three-quarters (75%) of attendees were White.

Table 3 shows the incident location and injury group. Over four in ten (43%) assaults occurred in a public place, over three-quarters (76%) of deliberate self-harm (DSH) injuries and over half (55%) of fall-related injuries were sustained at home.

The disposal of a patient can give an indication of the severity of the injuries sustained. Over six in ten (63%) attendees were discharged, 23% were referred for further treatment and 12% were admitted to hospital (**Table 4**). Over eight in ten (81%) RTC attendees were discharged, over half (54%) of assault attendees were discharged and almost half (46%) of burns and scalds attendees were referred for further treatment (**Table 5**).

Table 6 shows the arrival method of attendances to Royal Oldham Hospital ED. Two in ten (20%) attendees arrived by ambulance.

Assault attendances

Between October 2013 and September 2014 there were 1,499 assault-related injury attendances to Royal Oldham Hospital ED.

Seven in ten (70%) were male and 46% were aged between 20 and 34 years. Over four in ten (41%) arrived at the ED by ambulance (**Table 7**).

Figure 1: ED injury attendances by gender and month, October 2013 to September 2014

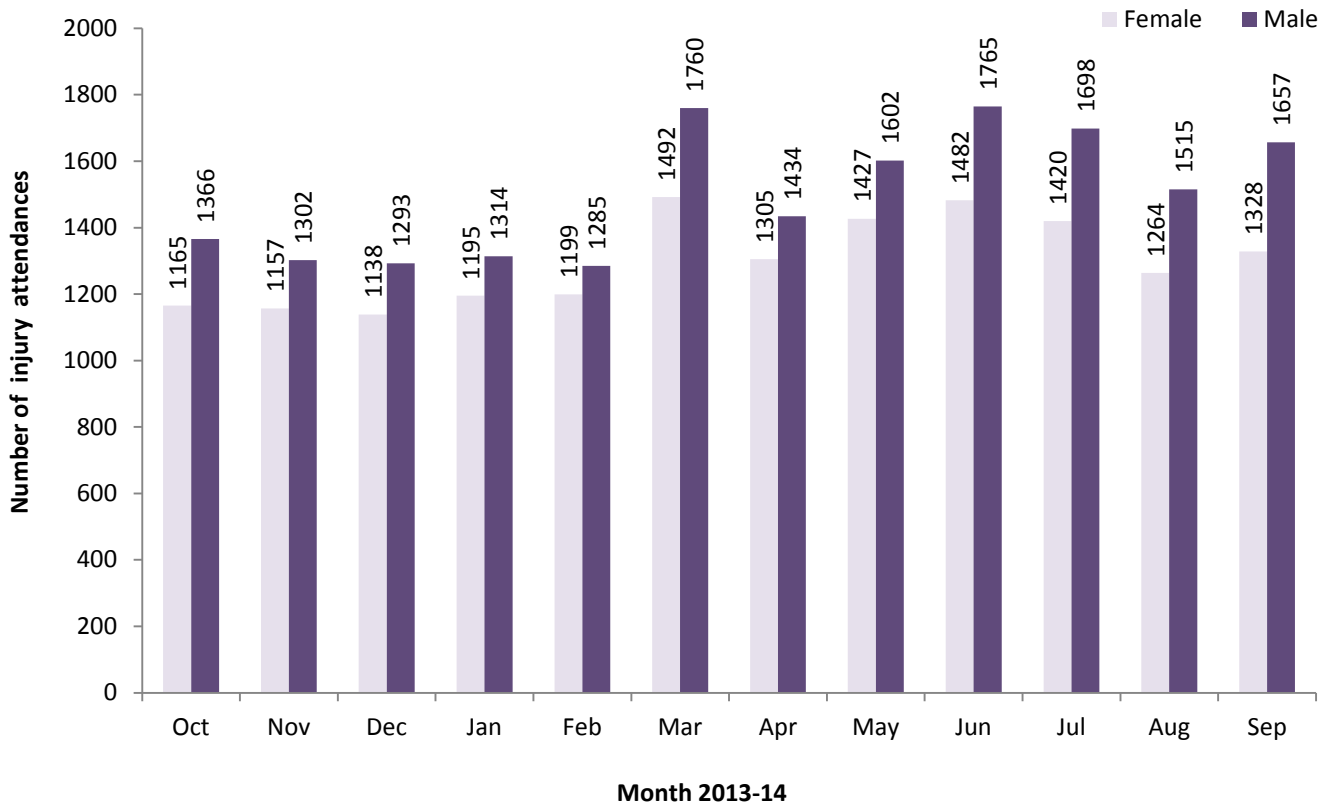
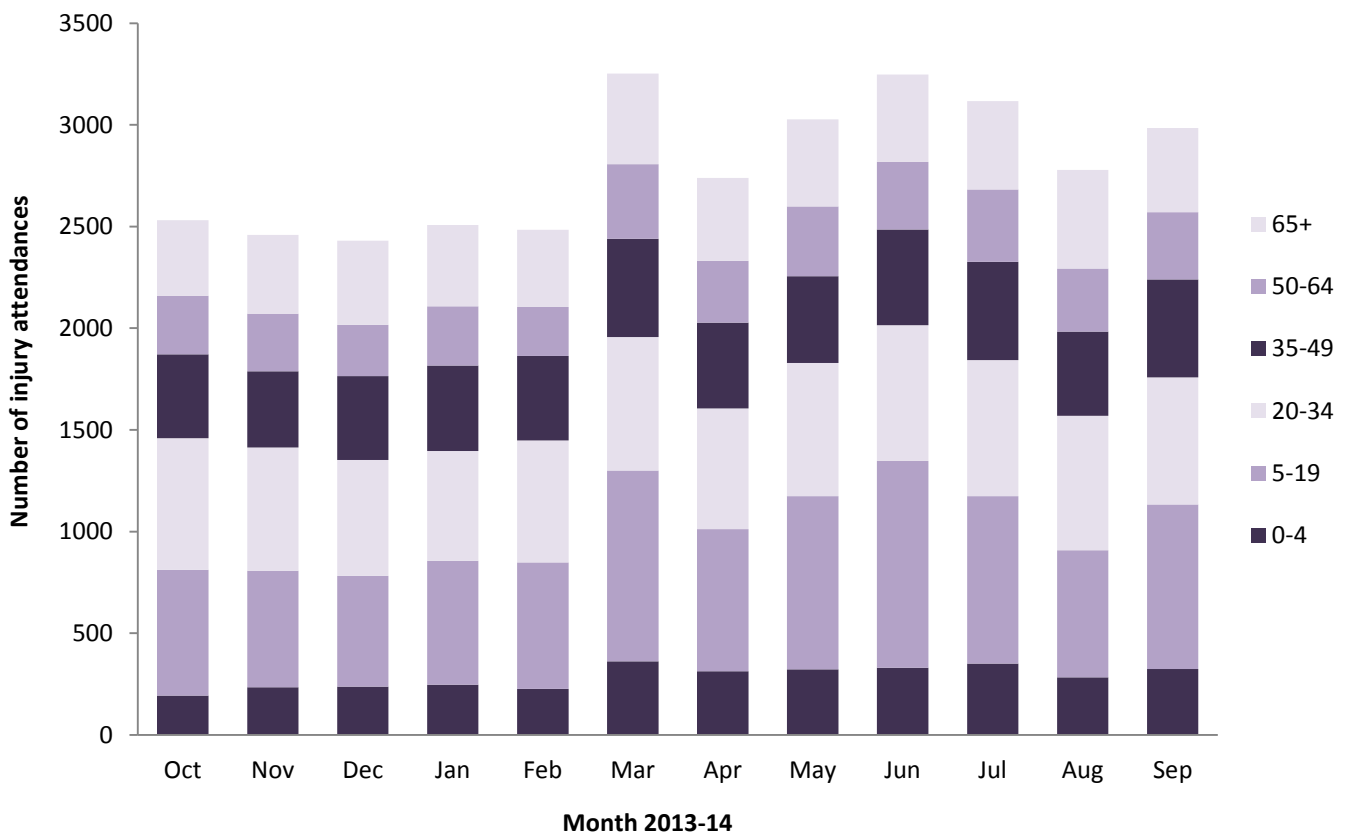


Figure 2: ED injury attendances by age group and month, October 2013 to September 2014[^]

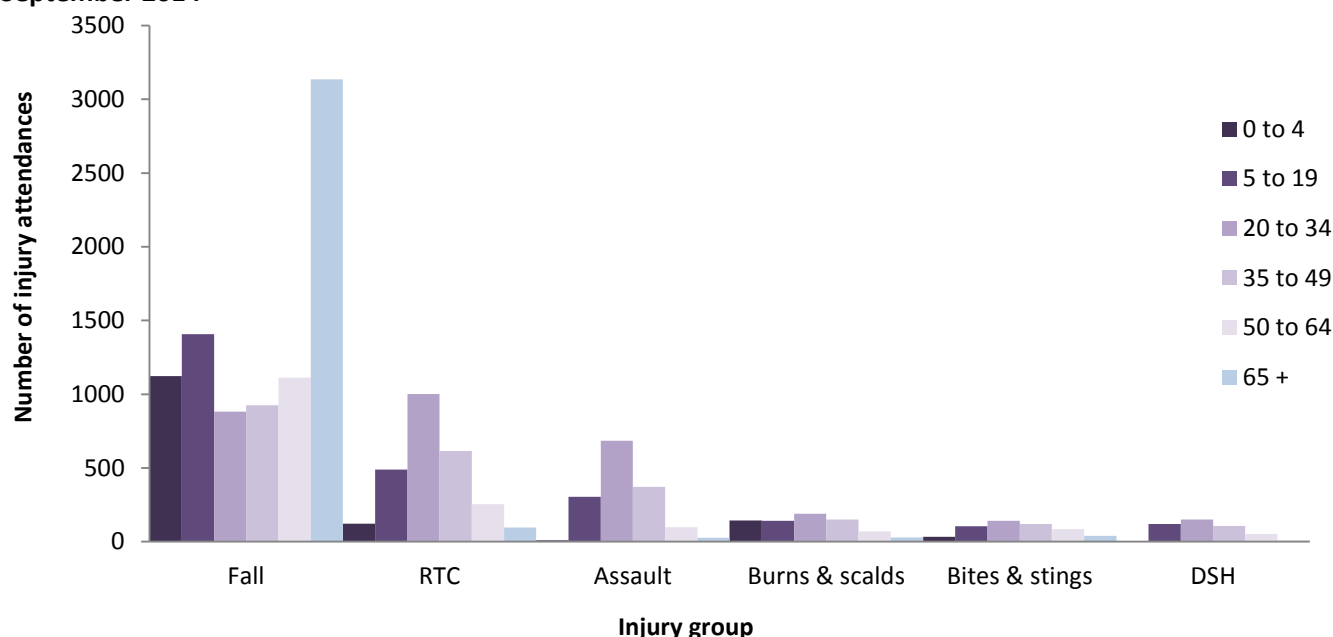


[^] There were 6 records where the age was unknown; these have been omitted from the chart.

Table 1: ED injury attendances by injury group and month, October 2013 to September 2014

Injury group	Oct	Nov	Dec	Jan	Feb	Mar	Apr	May	Jun	Jul	Aug	Sep	Total	%
Other injury	1381	1314	1268	1437	1417	1929	1582	1845	1925	1805	1475	1831	19209	57
Fall	652	643	678	637	661	820	706	698	797	797	802	696	8587	26
RTC	246	239	219	214	201	237	232	192	207	175	238	177	2577	8
Assault	124	129	139	119	94	145	92	127	140	140	131	119	1499	4
Burns & scalds	46	62	58	34	37	50	49	86	80	106	42	74	724	2
Bites & stings	45	43	38	28	38	34	42	33	57	70	51	48	527	2
DSH	37	29	31	40	36	37	36	48	41	25	40	40	440	1
Total	2531	2459	2431	2509	2484	3252	2739	3029	3247	3118	2779	2985	33563	100

Figure 3: ED injury attendances by age group and injury group (excluding other injury), October 2013 to September 2014[^]



[^] There were 6 records where the age was unknown; these have been omitted from the chart.

Table 2: ED injury attendances by ethnicity and month, October 2013 to September 2014^{1,2}

Ethnicity	Oct	Nov	Dec	Jan	Feb	Mar	Apr	May	Jun	Jul	Aug	Sep	Total	%
White	1927	1858	1789	1888	1866	2458	2077	2289	2431	2376	2067	2236	25262	75
Pakistani	243	224	263	233	243	315	258	305	327	279	278	287	3255	10
Not stated	165	148	191	158	148	202	157	168	173	163	167	177	2017	6
Bangladeshi	117	112	112	122	125	138	156	146	193	155	170	155	1701	5
Any other group	22	31	22	31	34	42	21	43	23	40	23	36	368	1
Black	19	30	17	21	17	33	26	32	30	38	27	29	319	1
Mixed	24	25	17	30	31	33	28	27	38	38	28	41	360	1
Any other Asian	***	13	9	<10	8	14	8	7	7	8	9	8	103	0
Indian	7	10	9	8	7	11	<10	7	<20	13	6	9	107	0
Chinese	***	<10	***	7	5	***	***	***	8	***	***	<10	51	0
Not recorded	***	***	***	***	0	***	0	***	***	***	***	***	20	0
Total	2531	2459	2431	2509	2484	3252	2739	3029	3247	3118	2779	2985	33563	100

¹ Please note that for all tables, all numbers less than five have been suppressed (with ***) in line with patient confidentiality. If there is only one number less than five in a category then two numbers will be suppressed to prevent back calculation from totals.

² White = Irish, British, other White background; Mixed = White and Black, White and Asian, Mixed - any other; Black = African, Caribbean, other Black.

Table 3: ED injury attendances by incident location and injury group, October 2013 to September 2014¹

Incident location	Assault		Bites & stings		Burns & scalds		DSH		Fall		RTC		Other		Total	
	n	%	n	%	n	%	n	%	n	%	n	%	n	%	n	%
Other	289	19	70	13	22	3	26	6	524	6	2107	82	3083	16	6121	18
Public place	651	43	132	25	48	7	38	9	1939	23	259	10	2706	14	5773	17
Not recorded	35	2	31	6	146	20	22	5	859	10	65	3	462	2	1620	5
Educational establishment	42	3	5	1	5	1	<20	4	307	4	***	0	1645	9	2022	6
Work	55	4	41	8	104	14	***	0	235	3	<20	1	1673	9	2124	6
Home	427	28	248	47	399	55	336	76	4723	55	130	5	9640	50	15903	47
Total	1499	100	527	100	724	100	440	100	8587	100	2577	100	19209	100	33563	100

Table 4: ED injury attendances by disposal method and month, October 2013 to September 2014³

Disposal method	Oct	Nov	Dec	Jan	Feb	Mar	Apr	May	Jun	Jul	Aug	Sep	Total	%
Discharged	1668	1591	1476	1540	1434	2009	1770	1901	2017	1935	1777	2024	21142	63
Referral/follow-up	501	500	573	600	673	817	626	772	864	781	548	621	7876	23
Admitted	302	317	302	337	350	384	307	322	317	351	400	302	3991	12
Other	60	51	80	32	27	42	36	34	49	51	54	38	554	2
Total	2531	2459	2431	2509	2484	3252	2739	3029	3247	3118	2779	2985	33563	100

Table 5: ED injury attendances by disposal method and injury group, October 2013 to September 2014^{1,3}

Disposal method	Assault		Bites & stings		Burns & scalds		DSH		Fall		RTC		Other		Total	
	n	%	n	%	n	%	n	%	n	%	n	%	n	%	n	%
Discharged	811	54	375	71	297	41	215	49	4333	50	2084	81	13027	68	21142	63
Admitted	277	18	126	24	332	46	91	21	1827	21	296	11	4927	26	7876	23
Referral/follow-up	227	15	<25	4	<70	9	85	19	2239	26	147	6	1203	6	3991	12
Other	184	12	***	1	<30	4	49	11	188	2	50	2	52	0	554	2
Total	1499	100	527	100	724	100	440	100	8587	100	2577	100	19209	100	33563	100

Table 6: ED injury attendances by arrival mode and month, October 2013 to September 2014

Arrival mode	Oct	Nov	Dec	Jan	Feb	Mar	Apr	May	Jun	Jul	Aug	Sep	Total	%
Private transport	1640	1563	1552	1600	1618	2117	1841	2066	2243	2135	1813	2095	22283	66
Ambulance	515	544	548	547	519	655	567	602	589	557	629	539	6811	20
Other	66	60	71	84	77	129	81	76	90	81	55	67	937	3
Taxi	134	132	126	121	134	158	123	114	153	156	121	122	1594	5
Foot	61	49	40	42	43	65	42	57	63	66	46	56	630	2
Public transport	76	63	56	77	54	85	58	59	73	87	58	63	809	2
Work transport	30	32	17	26	23	27	21	33	19	17	33	29	307	1
Police	9	16	21	12	16	16	6	22	17	19	24	14	192	1
Total	2531	2459	2431	2509	2484	3252	2739	3029	3247	3118	2779	2985	33563	100

³ Admitted = admitted to ED bed/became a lodged patient of the same health care provider; Discharged = discharged - did not require any follow-up treatment; Referral/follow-up = discharged - follow-up treatment to be provided by GP, referred to ED clinic, referred to fracture clinic, referred to other out-patient clinic, transferred to other health care provider, referred to other health care professional; Other = died in department, left department before being treated, left department having refused treatment, other.

ASSAULTS

Table 7: ED assault attendances by gender, arrival mode and age group, October 2013 to September 2014[†]

	Assault attendances (n=1,499)		All injury attendances (n=33,563)
	n	%	%
Gender			
Male	1054	70	54
Female	445	30	46
Arrival mode			
Ambulance	884	59	80
Other	615	41	20
Age group			
0 - 4	9	1	10
5 - 19	304	20	26
20 - 34	685	46	22
35 - 49	373	25	16
50 - 64	99	7	11
65 plus	26	2	15

[†] There were <5 assault records where the age was unknown; these have been omitted from the chart.

Published January 2015

Trauma and Injury Intelligence Group

Centre for Public Health, Faculty of Education, Health and Community, Liverpool John Moores University,
2nd Floor, Henry Cotton Building, Liverpool L3 2ET

T: 0151 231 4498 | E: tiig@ljmu.ac.uk | W: www.tiig.info and www.cph.org.uk | Twitter: [www.twitter.com/tiig_cph](https://twitter.com/tiig_cph)